

Visuels ELEMENTS

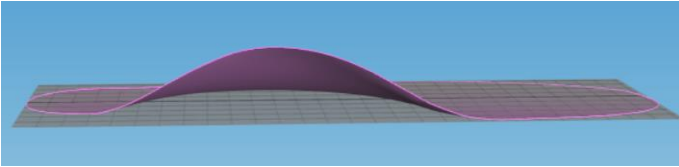
Toute reproduction, même partielle, doit au préalable avoir reçu l'accord écrit



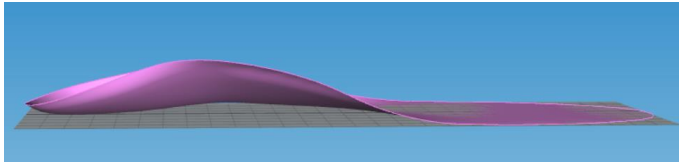
GESPODO

Hauteur de cuvettes

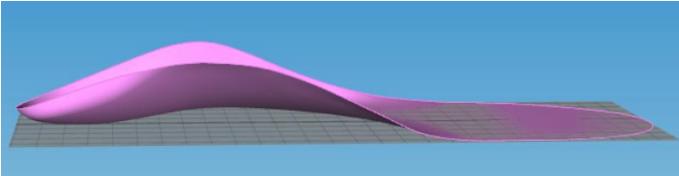
BASE PLATE : classique avec éléments



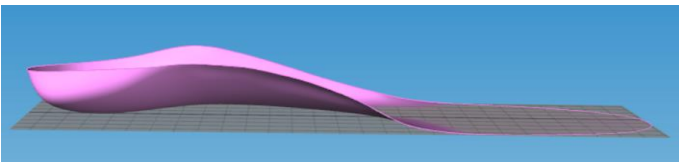
SANS CUVETTE



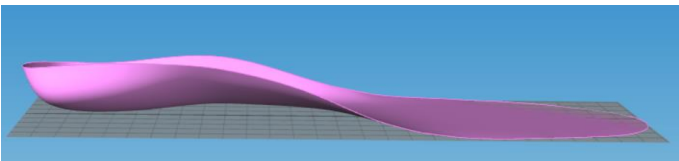
CUVETTE BASSE



CUVETTE MÉDIUM

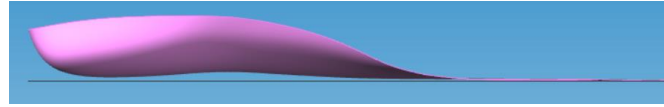


CUVETTE HAUTE



Sommet de courbure

COURBURE ANTÉRIEURE



COURBURE MÉDIUM

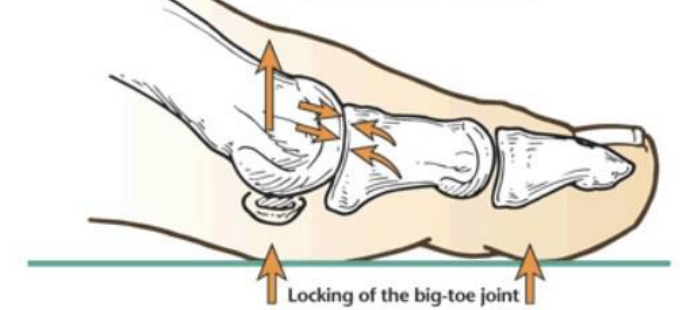


COURBURE POSTÉRIEURE

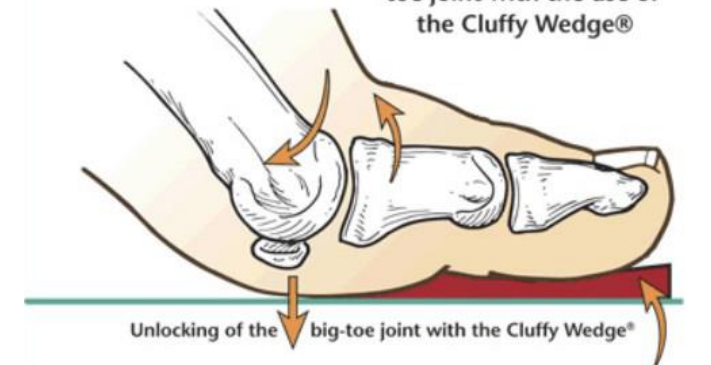


Cluffy Wedge

Abnormal foot function as a result of locking of the big-toe joint (Functional Hallux Limitus)



Normal foot function as a result of unlocking the big-toe joint with the use of the Cluffy Wedge®



Supination Resistance Test

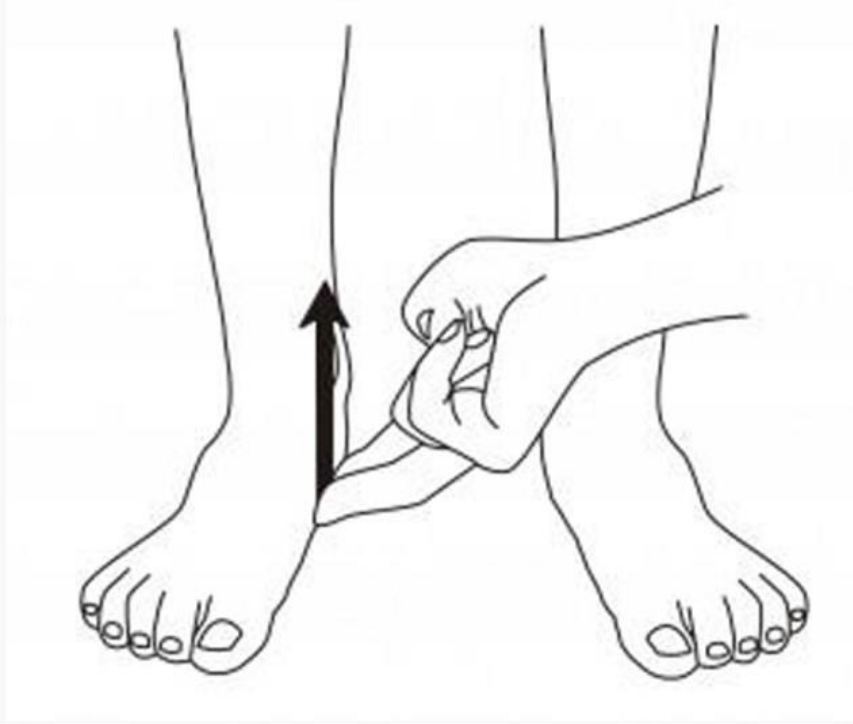


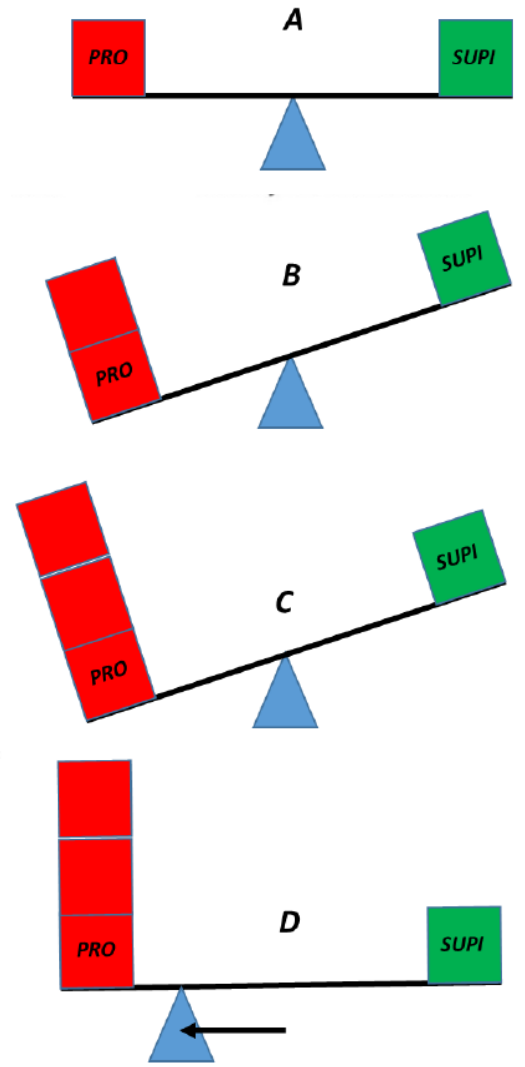
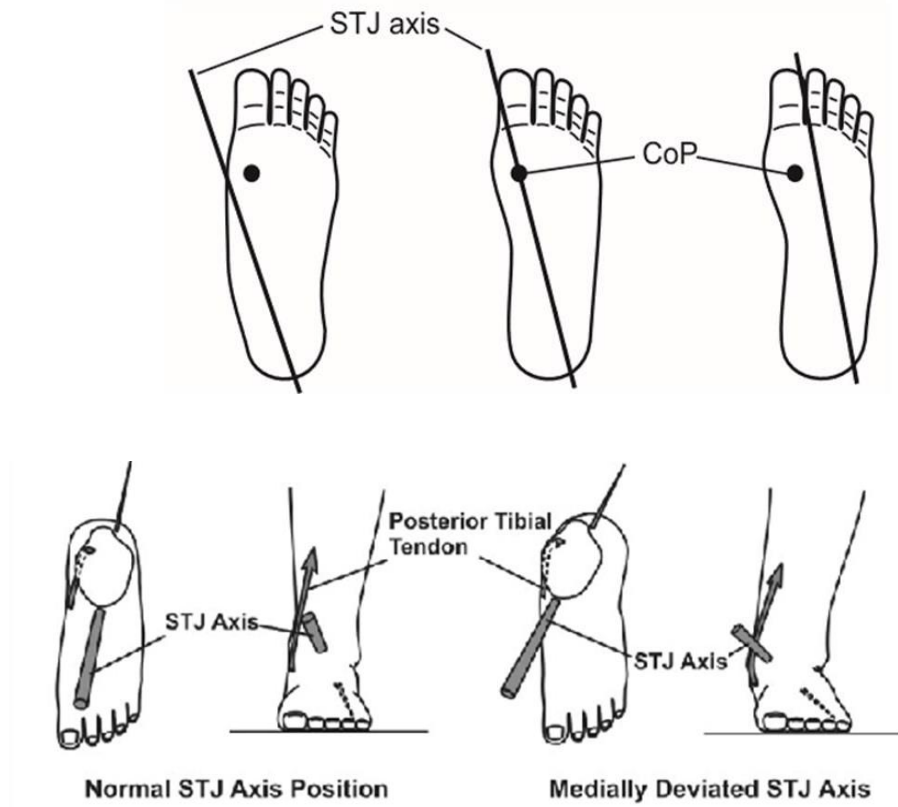
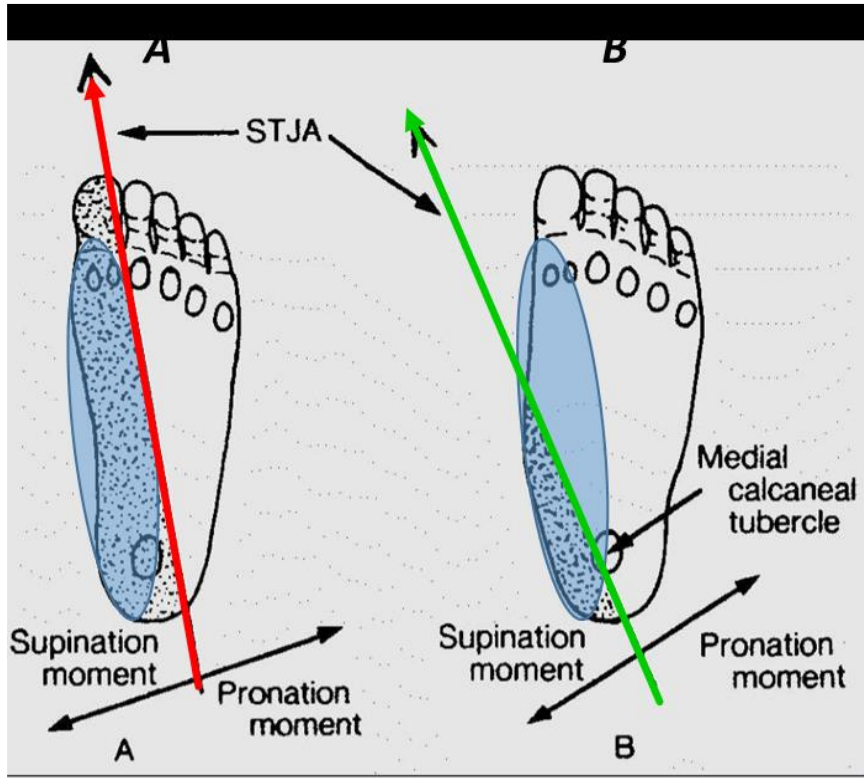
Image courtesy Kevin Kirby



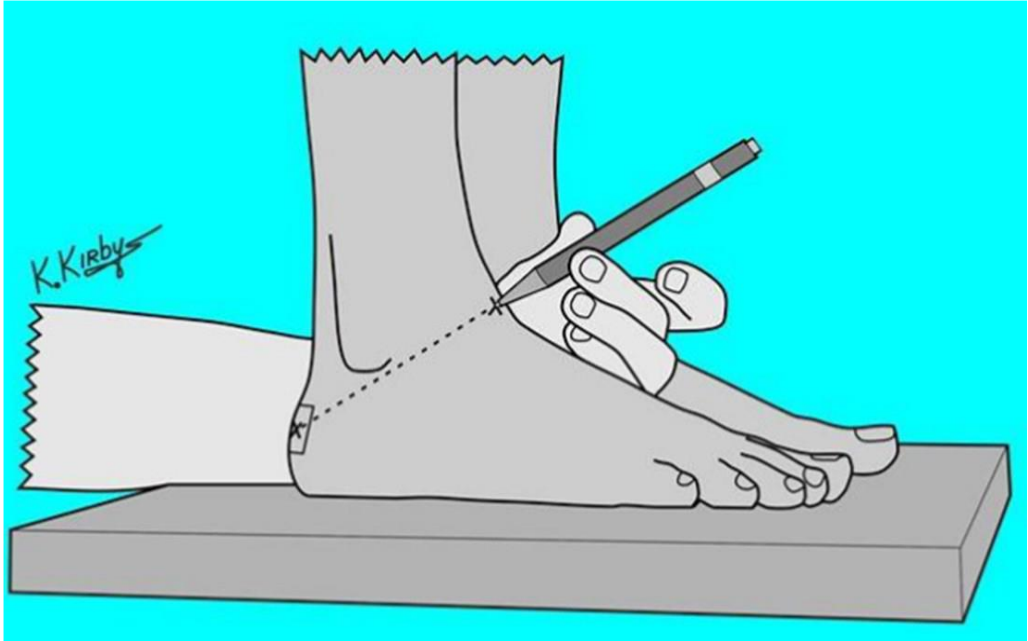
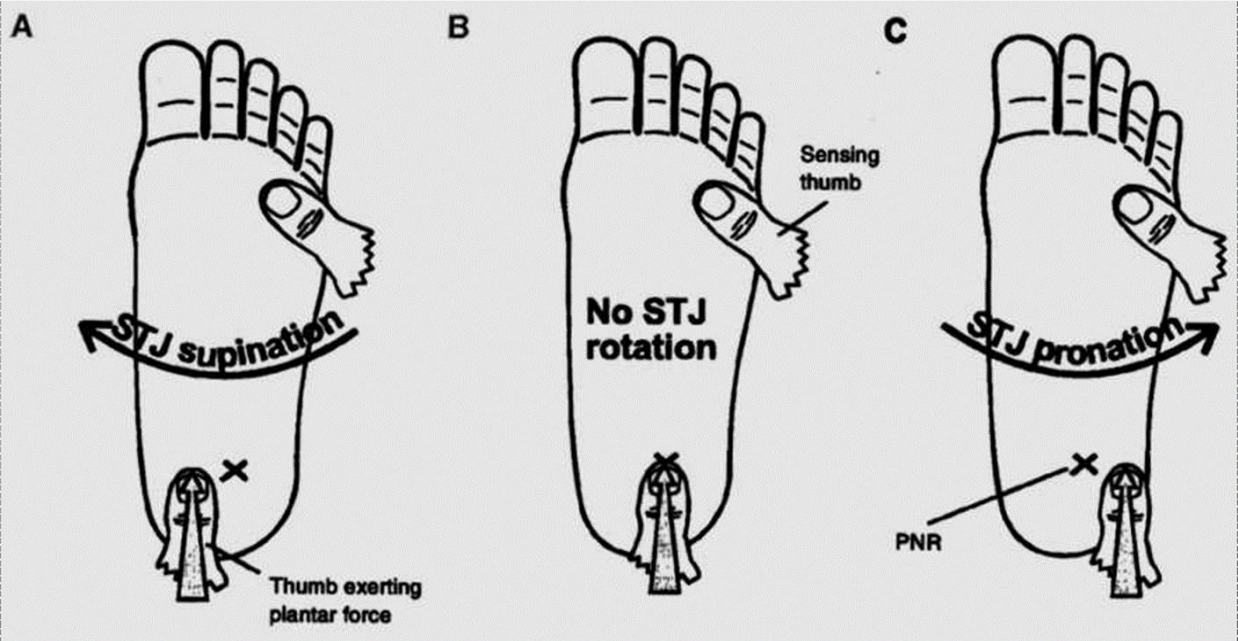
[Le Keystone est disponible sur Podoplace](#)

Sub-Talar Joint Axis Location (1)

Sub-Talar Joint Axis Location (2)

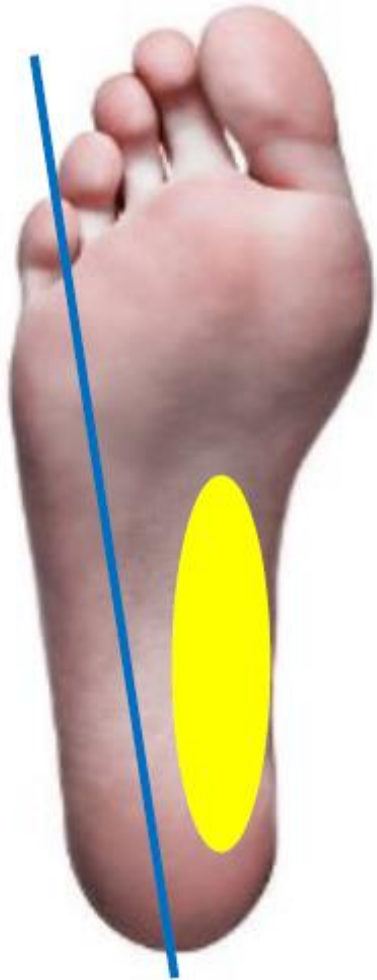


STJAL, détermination clinique (3)



Sut-Talar Joint Axis Location (4)

Extérieur



Théorique



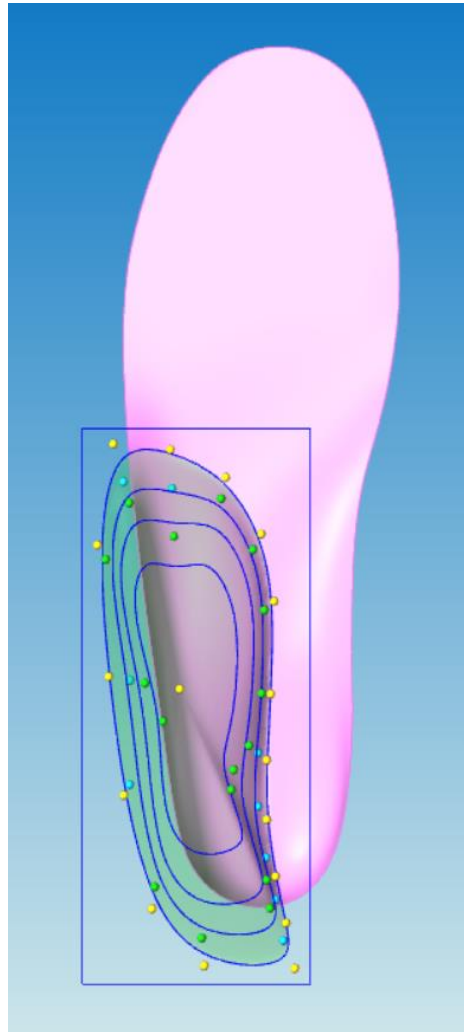
Médian



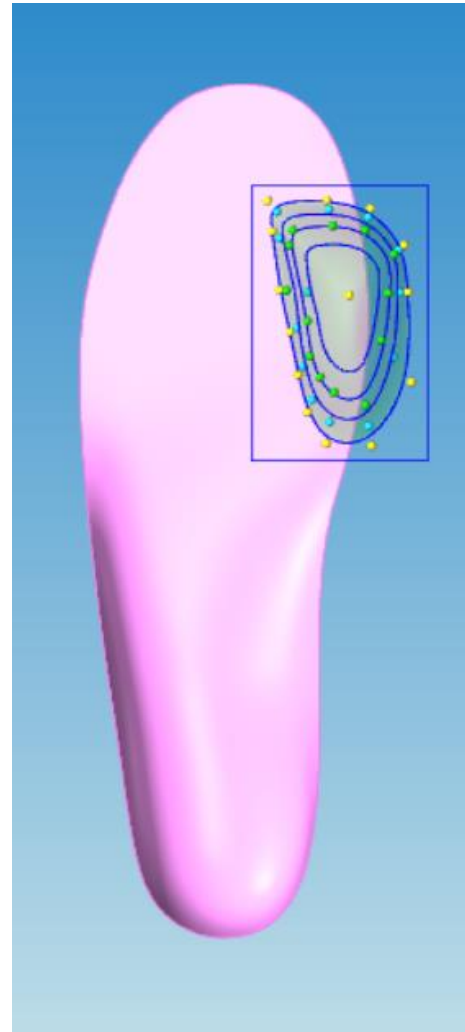
Médian Plus



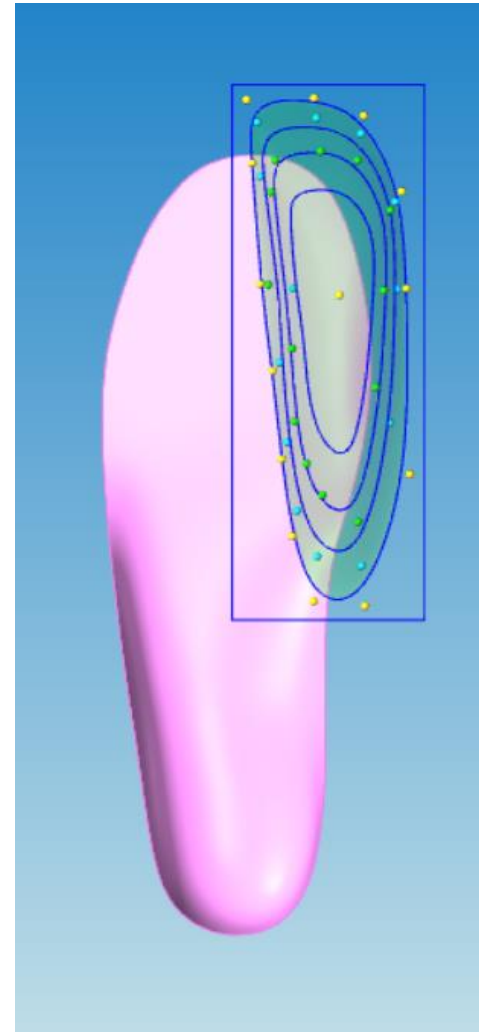
Coin Pronateur postérieur



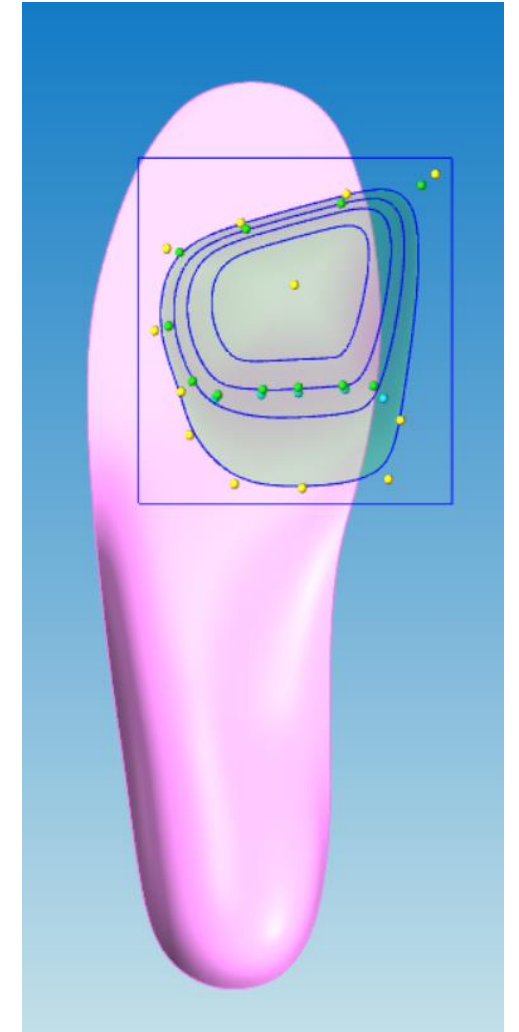
Elément du 1^{er} rayon



Sous-Antéro Capital



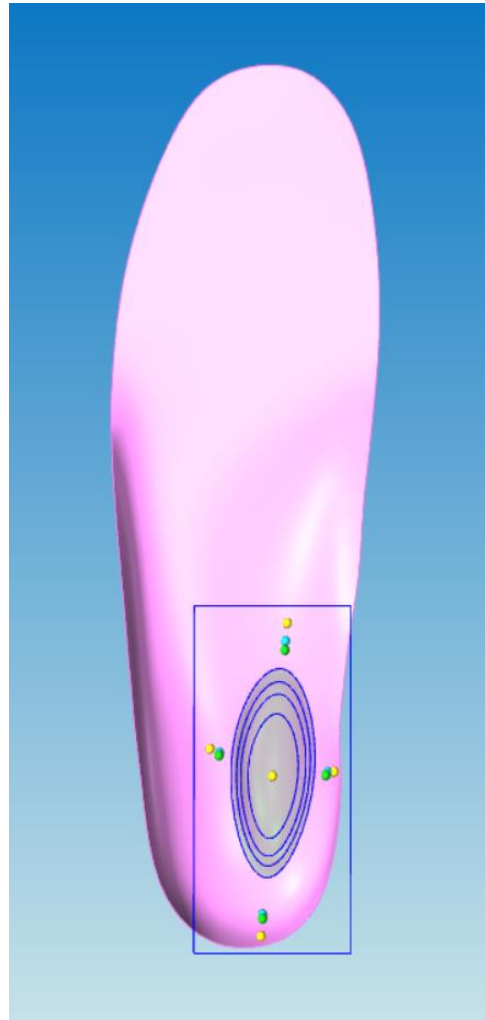
Sous-Antéro 1 à 4



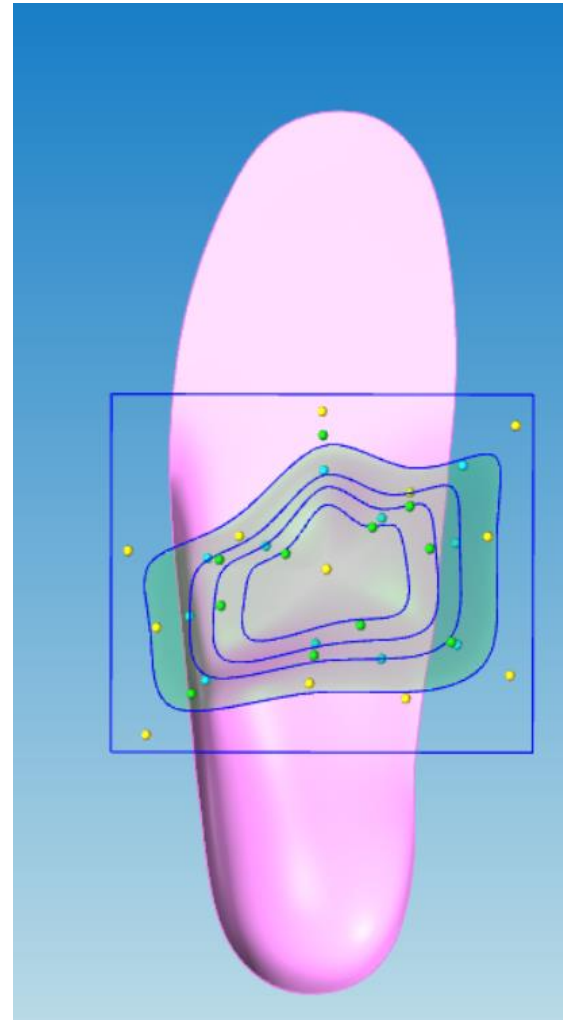
Extension de Morton



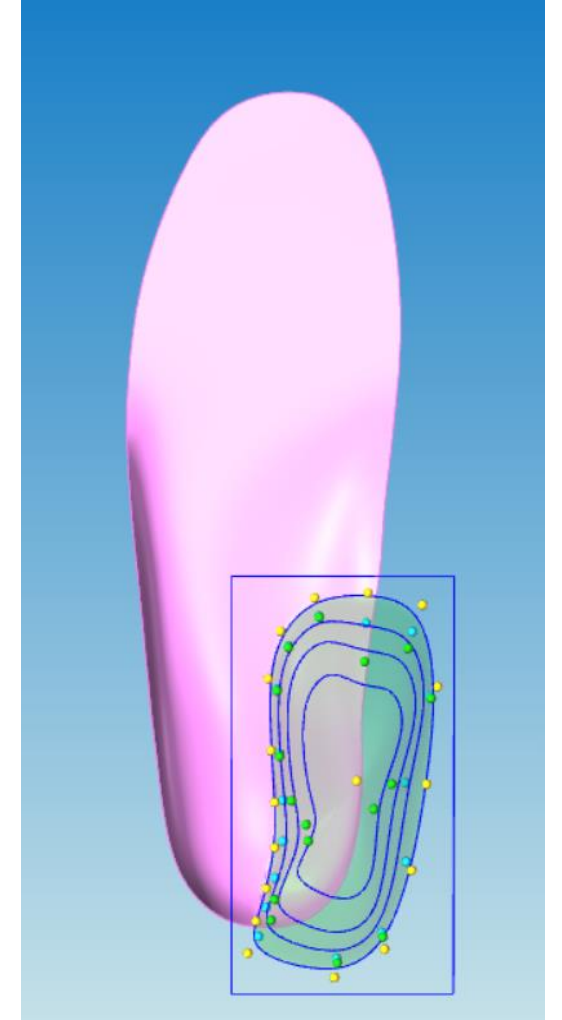
Décharge Epine Calca



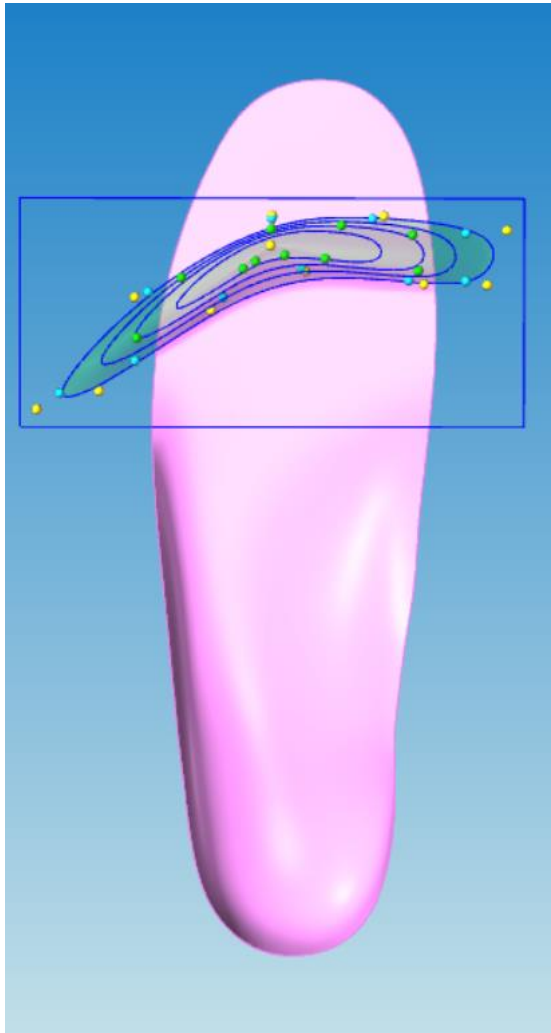
Barre Rétro-Capitale



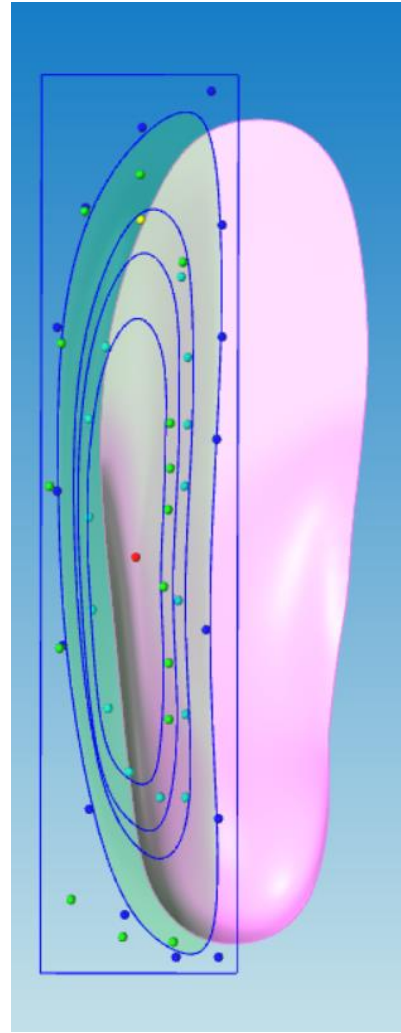
Coin Supinateur
postérieur



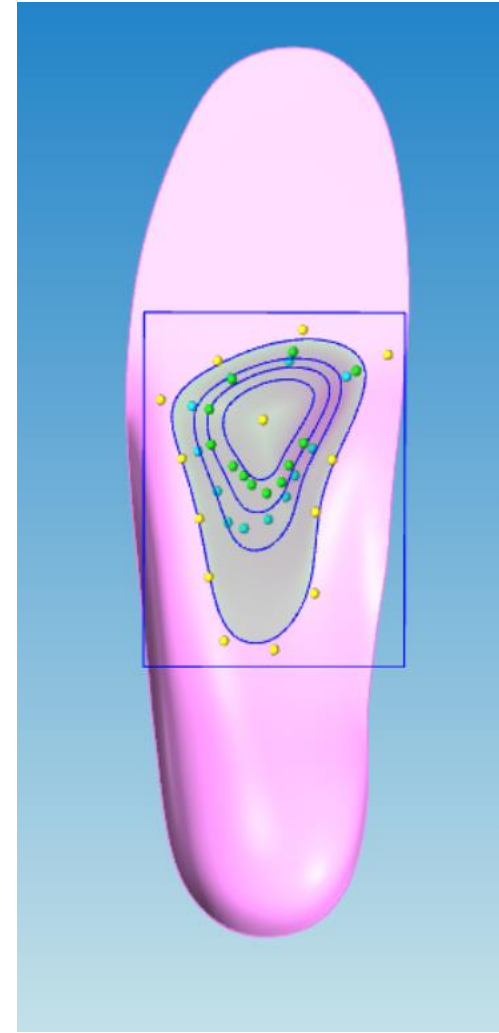
Barre Sous-Pulpaire



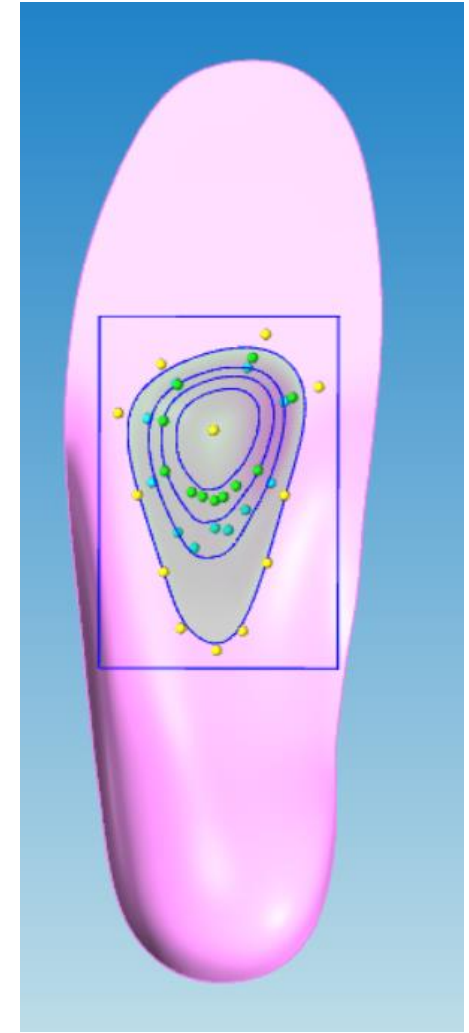
Bande Pronatrice



Appui Rétro-Capital
Médian 2-3-4



Appui Rétro-Capital
Médian



CONTACTEZ-NOUS

BE +32 470 33 20 81 | FR +33 6 49 21 13 65

info@gespodo.com - www.podo.gespodo.com

GesPodo S.R.L - Rue du Village, 54B - 7850 Enghien (Belgique)

TVA : BE 0657989996 - ING IBAN : BE24 3630 6242 9038 - BIC : BBRUBEBB

Toute reproduction, même partielle, doit au préalable avoir reçu l'accord écrit



GESPODO